



"ELIMINATING THE UNKNOWN"



Milking performance and procedure information to assist in improved parlor management.

Detacher settings are easily changed with the click of a mouse.

Set maximum milk time for both Automatic milking mode and Manual milking mode.

Real time information at the computer.

A BECO 7/8" system that accepts both 7/8" and 3/4" milk hose for maximum milk quality benefits.

Optional Grab-N-Go feature for vacuum models allowing an operator to attach units without touching a button.

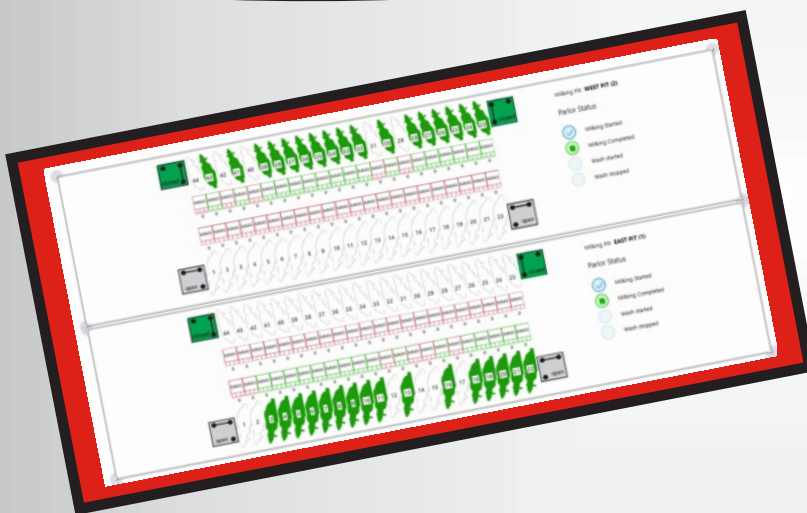
PARLOR MANAGEMENT IN AN ECONOMICAL DETACHER





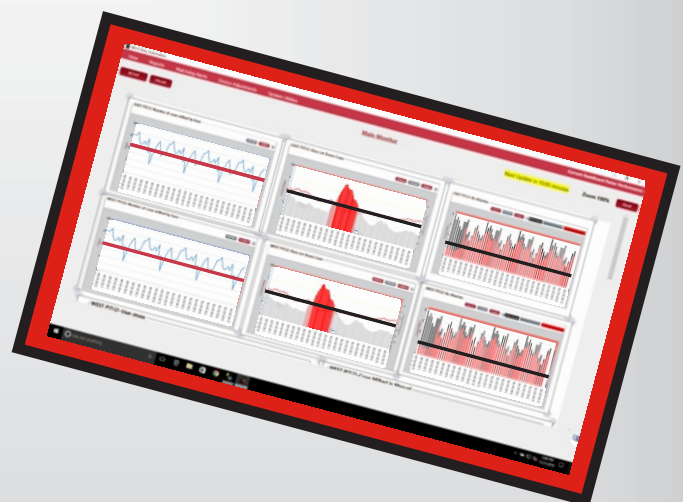
REAL TIME PIT DATA

**SEE EVERYTHING HAPPENING
IN YOUR PARLOR FROM THE
COMFORTS OF YOUR OFFICE**



EASY TO INTERPRET DASHBOARD

**SEE ALL CRITICAL PARLOR
PERFORMANCE DATA AT A GLANCE**



**EXCEPTIONAL COW MILKING IS OUR PASSION!
WE DO THIS WITH LARGER DIAMETER COMPONENTS
HAVING A ROBUST USER-FRIENDLY DESIGN AND
INTUITIVE SOFTWARE. WE DELIVER GREAT MILKING
SYSTEMS BACKED BY HIGHLY TRAINED DEALERS.**

For more information visit www.becoknows.com or call 800-344-7166